

# COMMUNITY HOUSING SOLUTIONS

EXPANDABLE SOLUTIONS INC  
*"Expandable Solutions Specialists"*

## WEB SITE

[www.expandablesolution.com](http://www.expandablesolution.com)

## CONTACT US



[info@expandablesolution.com](mailto:info@expandablesolution.com)



1-360-798-4058



EXPANDABLE COMMUNITY SITES

Quick, Efficient and Affordable  
Community Solutions



**EXPANDABLE SOLUTIONS INC**  
Expandable Solutions Specialists

**Our Mission:** To provide cost-effective, scalable solutions that cater to a diverse range of customers.

# CONTENTS

Concept and Feature.....	P3
Configuration.....	P4
Product Sections View.....	P5
Product Specifications View .....	P6
Power and Plumbing .....	P7
3D Display.....	P8
20 Foot Design Layout.....	P9
20 Foot Mini Design Layout.....	P10
10 Foot Mini Design Layout.....	P11
Physical and Customer Display.....	P12
In Room Display .....	P13
Interior/Bathroom Options.....	P14
Appliance Options.....	P15-16





# CONCEPT AND FEATURES OF EXPANDABLE UNITS

Expandable Solutions products are quick easy to assemble! The production and approximate delivery period is around 60-90 days. The units come folded to save space and costs during transportation. Units include electricity and plumbing. Units are quickly and easily installed and can be moved and reassembled! Scalable solutions that cater to a diverse range of customer needs!

## Flexibility and mobility



- Flexible structural design
- Quick disassembly, relocation, and assembly
- Ideal for temporary buildings and mobility needs
- Perfect do it yourself project

## Customizable



- Customizable structures and interior layouts
- Flexibility in room sizes, kitchen, bathrooms, etc.
- Tailored to specific requirements and purposes

## Quick installation



- Prefabricated and modular design
- Quick and easy installation
- Shortened construction time and increased efficiency
- Savings in labor and cost

## Diversified applications



- Temporary housing, Offices
- Commercial purposes
- Educational facilities
- Medical facilities
- Tourism and hotel industry

## Sturdy and durable

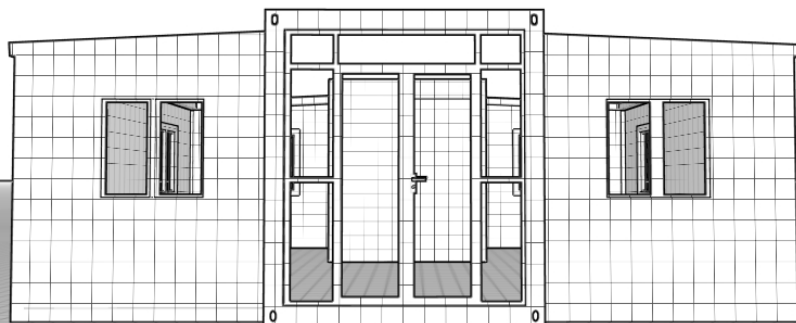


- Made from high-strength steel
- Adaptability to harsh environments and climates
- Long lifespan and stable performance

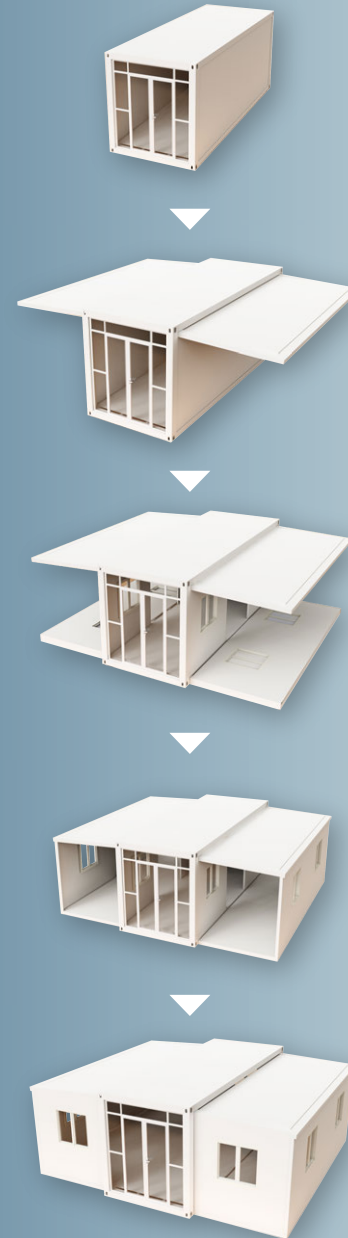
## Environmental protection and energy saving



- Environmental-friendly materials
- Reduced energy consumption and environmental impact



# INSTALLATION PROCEDURE



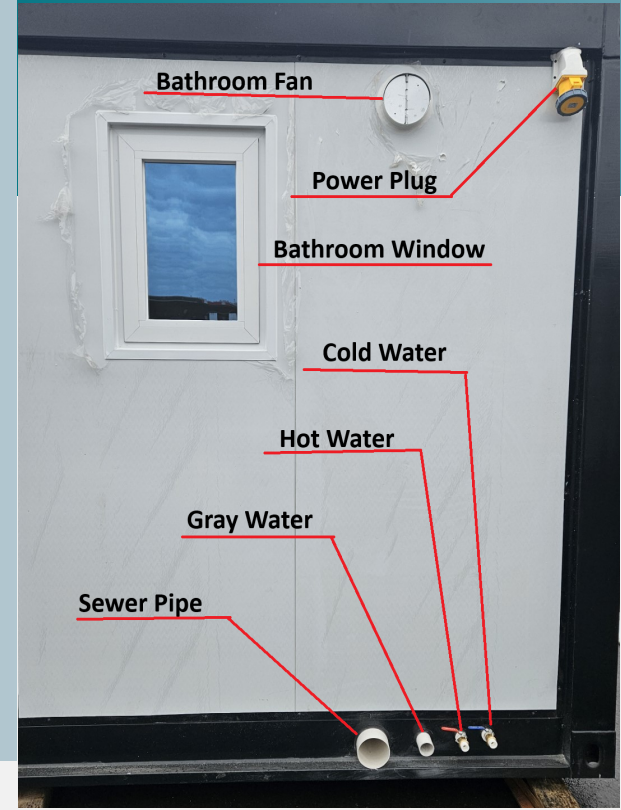
Quick and Easy Set up!



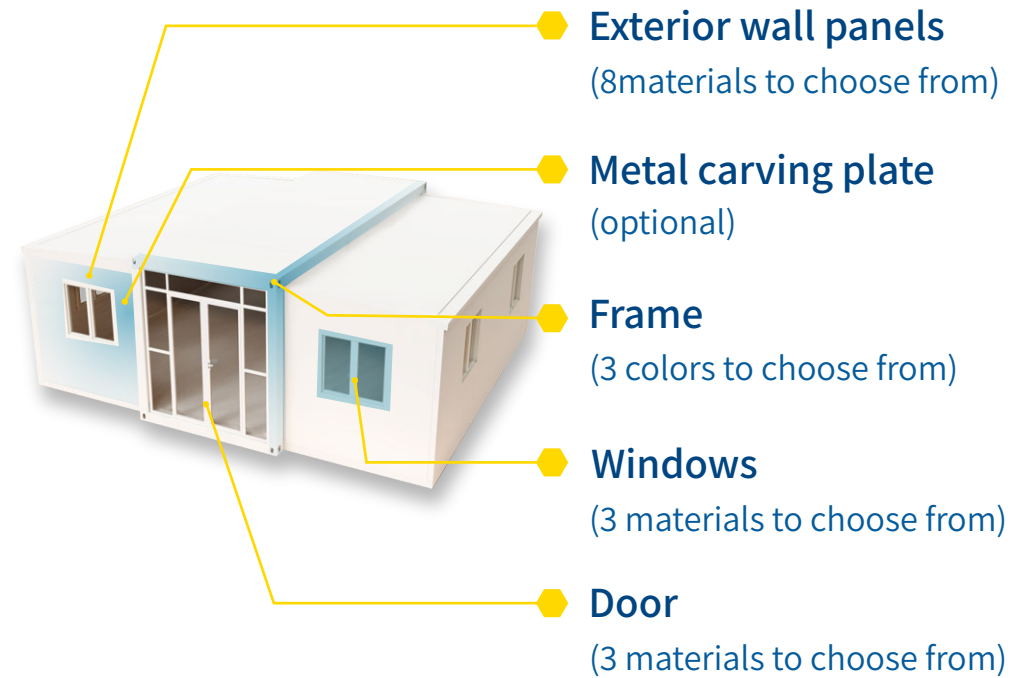
## BOTTOM OF UNITS FLOOR



## POWER AND PLUMBING

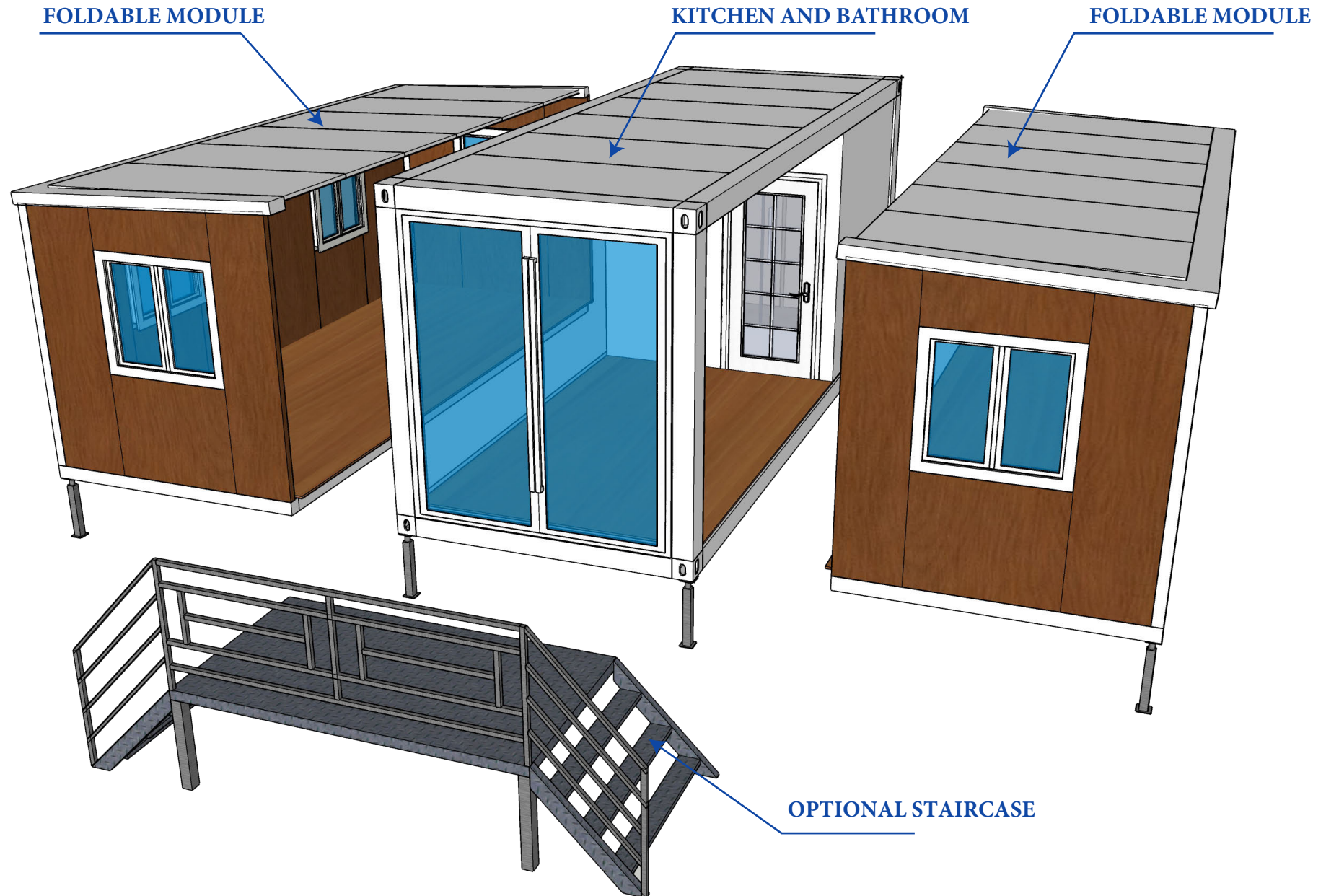


# CONFIGURATION

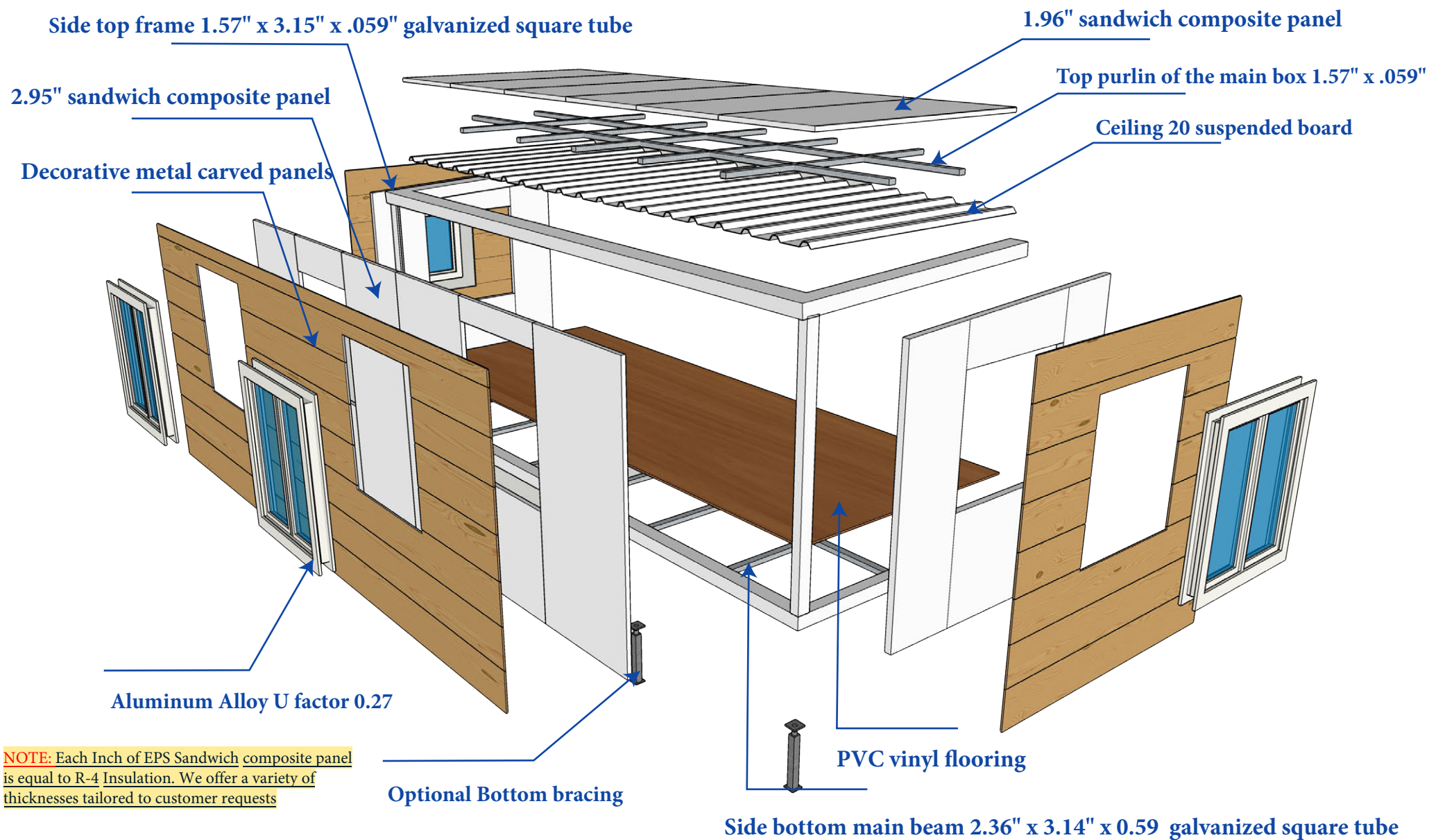




# PRODUCT SECTION VIEW



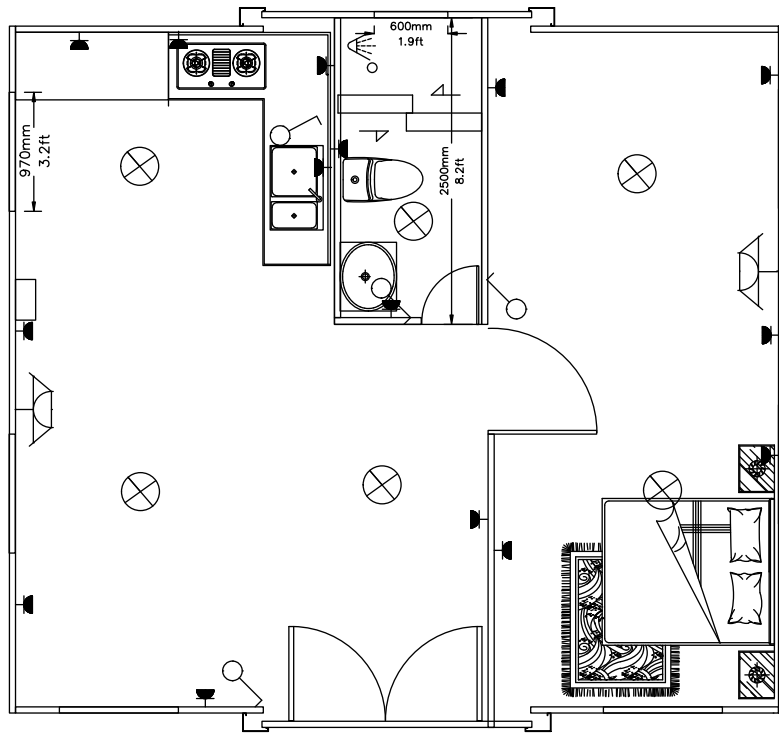
# SPECIFICATION





# POWER AND PLUMING

## CIRCUIT DIAGRAM



LED switch socket AC socket

### Sockets



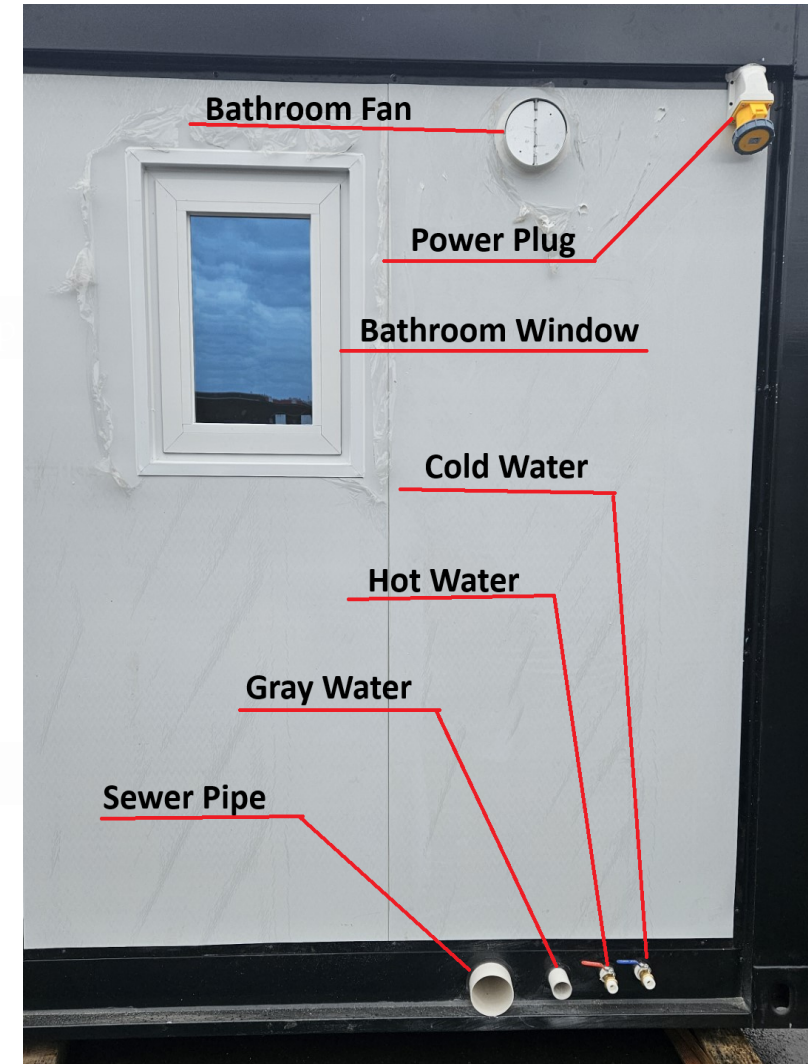
### Electrical Box-Inside 50 a



### External distribution



## PLUMBING



# 3D APARTMENT DISPLAY





# TYPES AND SPECIFICATIONS

# 20 Foot Layout-400 SQ Feet

## 20 FT BASIC CHARACTERISTICS



### External Dimensions (feet)

(W) 20.7' x (L) 19.35' (H) 8.1'

### Internal Dimensions (Feet)

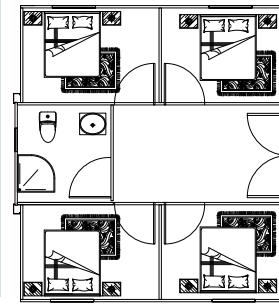
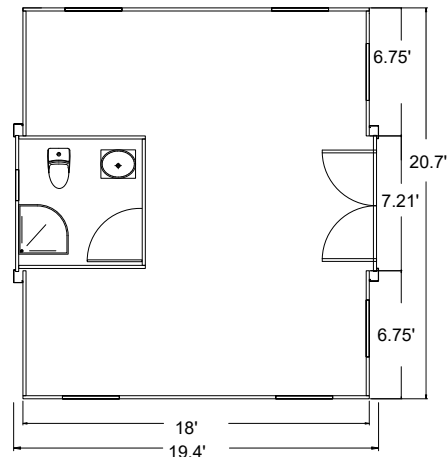
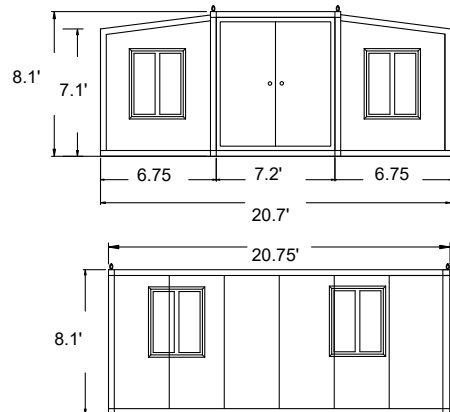
(W) 20.18 x (L) 18.24' (H) 8.1'

### Folded Dimensions (Feet)

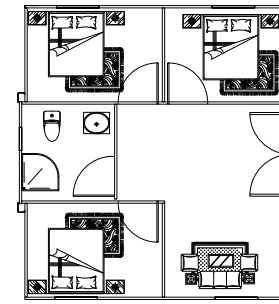
(W) 7.2' x (L) 19.35' x (H) 8.1'

### Total Weight (lbs)

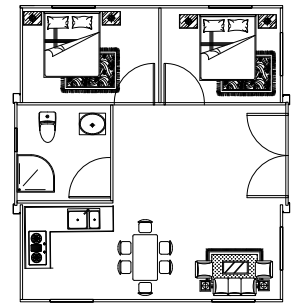
Approximately 8000lbs



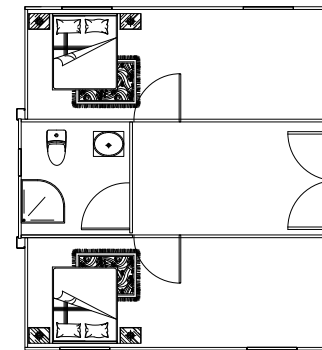
20FT - 001



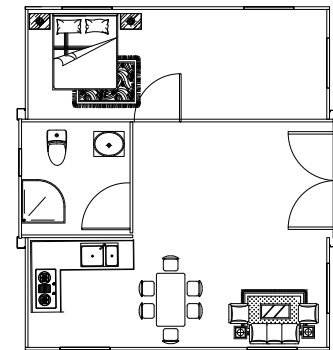
20FT - 002



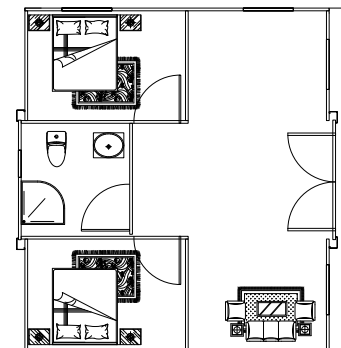
20FT - 003



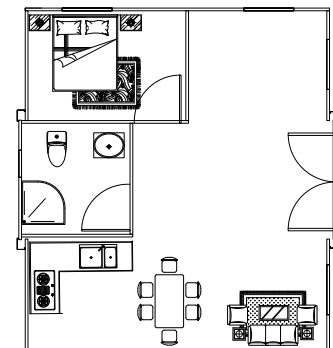
20FT - 004



20FT - 005



20FT - 006



20FT - 007

# 20 FT MINI



## External Dimensions (Feet):

(W) 15.8' x (L) 19.3' x (H) 8.1'

## Internal Dimensions (Feet):

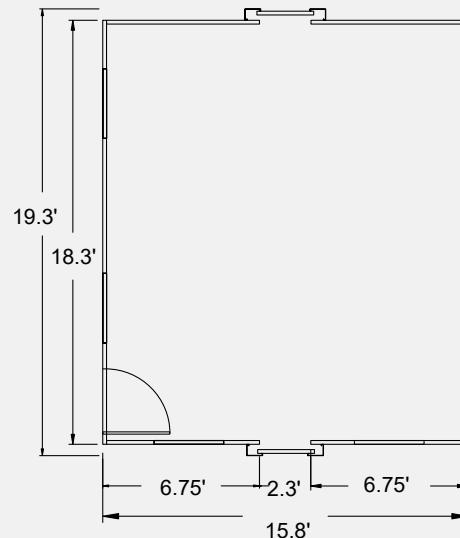
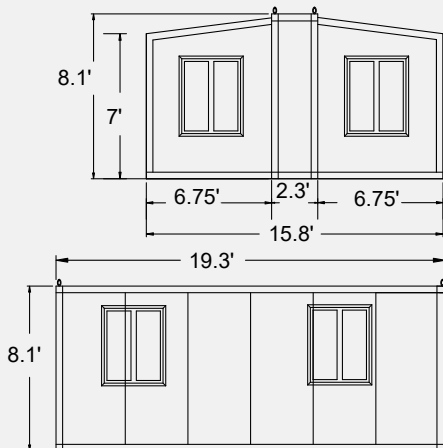
(W) 15.2' x (L) 18.3' x (H) 8.1'

## Folded Dimensions (Feet):

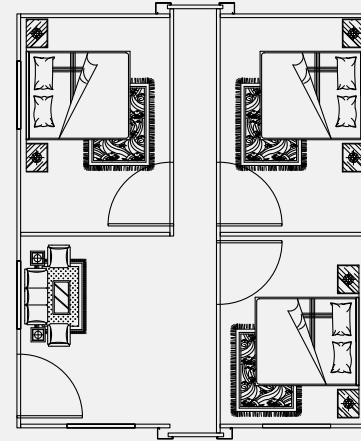
(W) 2.29' x (L) 19.3' x (H) 8.1'

## Total Weight (LBS):

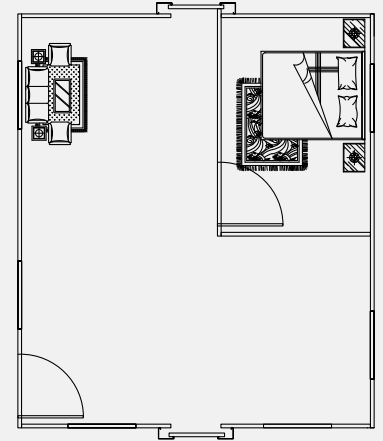
Approximately 4200lbs



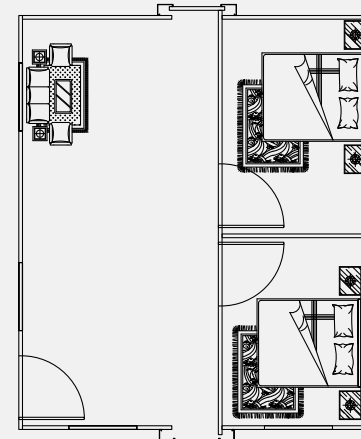
# 20 Foot Mini Layout- 300 sq feet



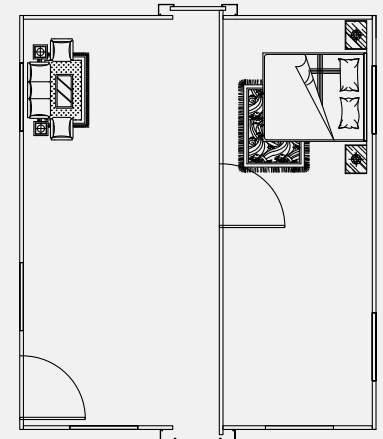
20FT MINI - 001



20FT MINI - 002



20FT MINI - 003



20FT MINI - 004



# 10<sub>FT</sub>

## 10 Foot Layout- 192 Sq Feet



### External Dimensions (Feet):

(L) 9.6' x (W) 20.6' x (H) 8.1'

### Internal Dimensions (Feet):

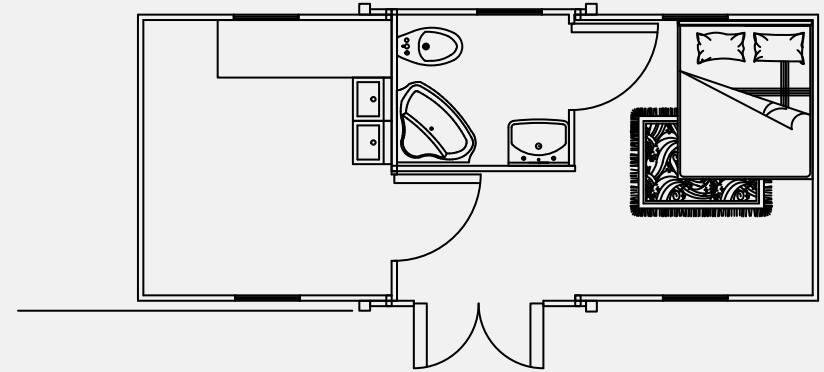
(L) 7.8' x (W) 20.1' x (H) 7.3'

### Folded Dimensions (Feet):

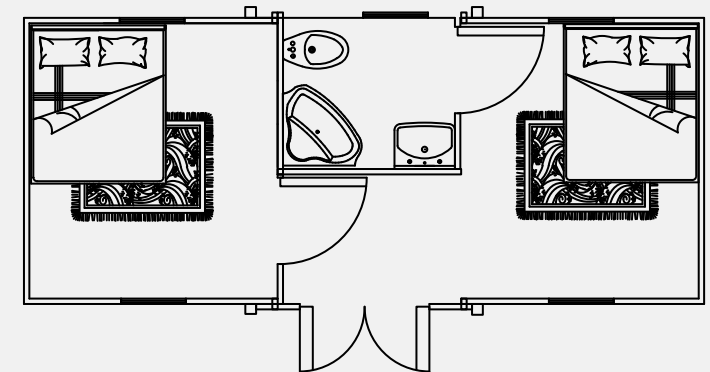
(L) 9.6' (W) 7.2' (H) 8.1'

### Total Weight (lbs):

Approximately 2700lbs



10FT MINI - 001



10FT MINI - 002



# PHYSICAL DISPLAY



# CUSTOMER DISPLAY





# IN-ROOM DISPLAY



## L-shaped cabinet



Acrylic Bathroom



PVC Bathroom



Marble Bathroom



20FT mini dedicated  
Integrated bathroom



# OPTIONAL HOME APPLIANCES

Refrigerator



Water heater



Air conditioner



Double bed



Closet



Oven



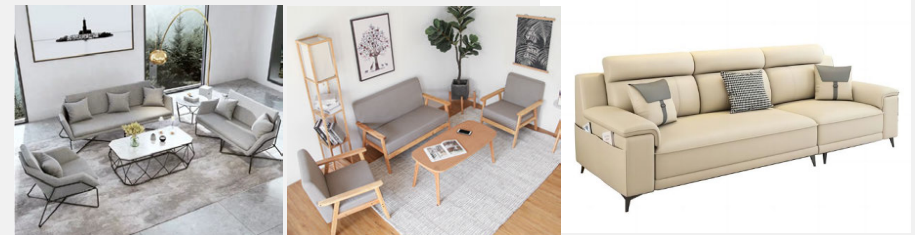
Single bed



Hospital bed



Sofa



Air fryer



Louver curtain



Aluminium alloy

PVC

Automatic curtain

Table and chair





# OPTIONAL HOME APPLIANCE

# BATHROOM OPTIONS

## Cabinet



Milky white



Champagne color



Apple green



Sky blue



Burgundy



Dark gray



## Toilet



## Bathroom sink



## Toilet & Shower

